



**10b Montpelier, Weston-Super-Mare, BS23 2RG**

**£130,000**

- Hall Floor Flat
- Lounge
- Shower Room
- One Double Bedroom
- Kitchen
- No Chain



# 10b Montpelier, Weston-Super-Mare BS23 2RG

Rachel J Homes is pleased to market this Hall Floor Flat located in Montpelier close to shops, amenities, bus routes and the town centre/ seafront. Ideal First Time Buy or Investment. The accommodation comprises of Lounge, Galley Kitchen, Double Bedroom and Shower Room. Added benefits of this property include Double Glazing and NO CHAIN. Accompanied viewings - CALL NOW to book yours !



1



1



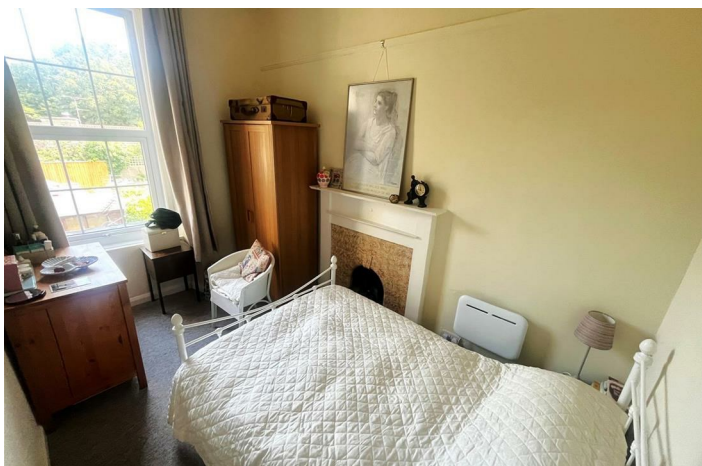
1



**EPC**  
E

**Leasehold**

**Council Tax Band: A**



### **Vestibule**

Composite entrance door, gas meter for upstairs flat, electric meter and consumer unit, wooden entrance door into;

### **Lounge / Diner 4.26 x 4.03 (13'11" x 13'2")**

Upvc double glazed sash window with wooden shutters, ceiling rose, cornice, picture rail and dado rail ,feature fireplace with tile and wooden surround, built in book shelves, wall mounted electric heater, BT internet connection, door to;

### **Kitchen 3.58 x 1.26 (11'8" x 4'1")**

Belfast sink and wooden drainer with storage under, space for electric cooker, fridge freezer and washing machine.

### **Double Bedroom 3.51 x 2.21 (11'6" x 7'3")**

Upvc double glazed window to rear, cornice, picture rail, feature fireplace with tile and wooden surround.

### **Inner Hallway**

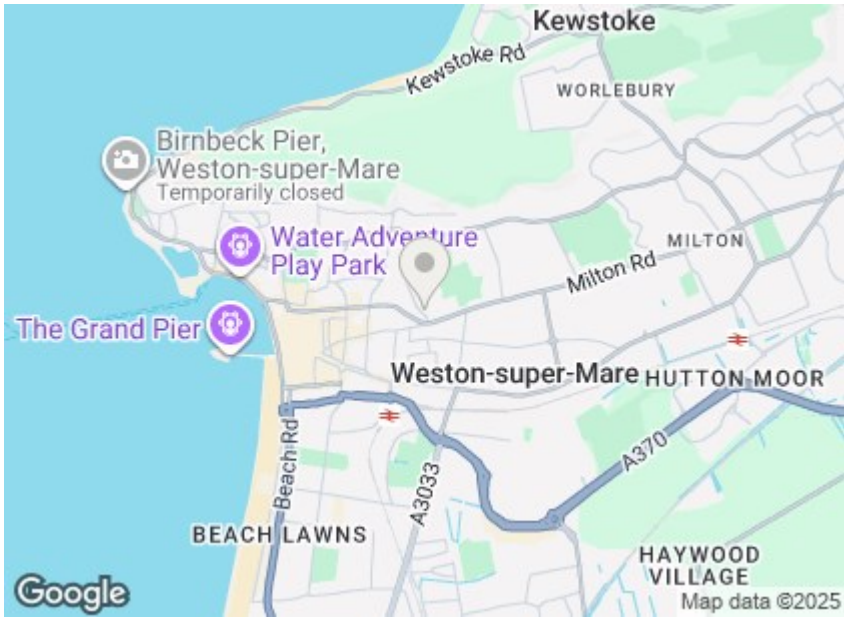
Understairs storage and cupboard.

### **Shower Room 2.60 x 1.30 (8'6" x 4'3")**

Upvc Double glazed window to side, cupboard housing mini boiler, shower cubicle with electric shower, low level W/C, pedestal wash hand basin, electric heater.

### **External**

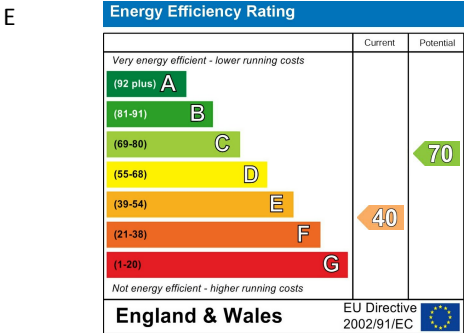
Shared outside front garden



## Viewings

Viewings by arrangement only. Call 01934 621299 to make an appointment.

## EPC Rating:



## Hall Floor

